

**Stelis chasei** Luer, sp. nov. TYPE: Costa Rica. Cartago: southwest of Pejibaye toward Siquirres, alt. 650–700 m, 25 Mar. 1984, *M. Chase* 84376 (Holotype: CR; Isotype: MICH), C. Luer illustr. 17351.

FIGURE 15.

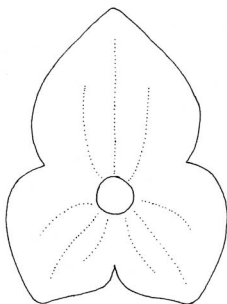
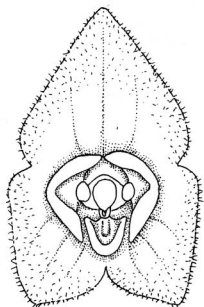
Species haec *S. parvulae* Lindl. similis, sed foliis angustioribus, bracteis floralis parvis tubulosis, sepalis pubescentibus, sepalis lateralibus obliquis quam sepalo dorsali minoribus et stigmate brachiato distinguitur.

**Plant** small, epiphytic, caespitose; roots slender. **Ramicauls** erect, slender, 9–11 mm long, enclosed by a loose, tubular sheath and 2 others at the base. **Leaf** erect, coriaceous, narrowly obovate, obtuse, 2.5–3.5 cm long, 0.6–0.8 cm wide, cuneate below into a petiole ca. 5 mm long. **Inflorescence** an erect, laxly several to (8)-flowered raceme, 6 cm long including the peduncle 3.5 cm long, from an annulus below the apex of the ramicaul; floral bracts tubular, acute, 1.5 mm long; pedicels ca. 1.5 mm long; ovary 1 mm long. **Sepals** reddish with yellow-white margin, spread, pubescent within, connate basally, unequal in size, the dorsal sepal broadly ovate, obtuse, 2 mm long, 2 mm wide, 3-veined, the lateral sepals oblique, 1.6 mm long, 1.6 mm wide. **Petals** transversely obovate, broadly rounded and thickened along the apical margins, 0.66 mm long, 1 mm wide. **Lip** oblong, triangular in side-view, 0.5 mm long, 0.5 mm wide, 0.6 mm deep, the apical margin rounded and thickened, the dorsum with an oblong, pubescent callus, with a glenion on the anterior surface, the base truncate, hinged to the base of the column. **Column** 0.6 mm long, 0.7 mm wide, with the foot obsolescent, the anther and the stigma apical and bilobed, the stigmatic lobes on arms to either side of the anther.

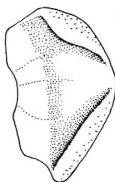
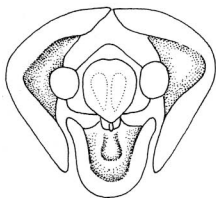
**Etymology.** Named for Mark Chase, who collected this species.

**Isotype.** Costa Rica. Cartago, southwest of Pejibaye toward Siquirres, alt. 650–700 m, 25 Mar. 1984, *M. Chase* 84376 (MICH).

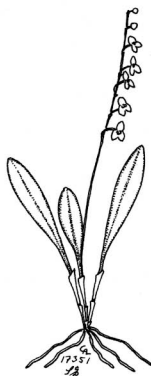
This species, described from Costa Rica, is similar to *Stelis parvula*, but it differs in significant details. *Stelis chasei* is characterized by a small habit with short ramicauls; narrow leaves 6–8 mm wide; inconspicuous floral bracts; obtuse sepals densely pubescent within; a proportionately large dorsal sepal; distinctly smaller, oblique lateral sepals; proportionately large, flabellate petals; a proportionately small lip with a pubescent callus; and a stigma with stigmatic arms.



2 mm



1 mm



5 cm